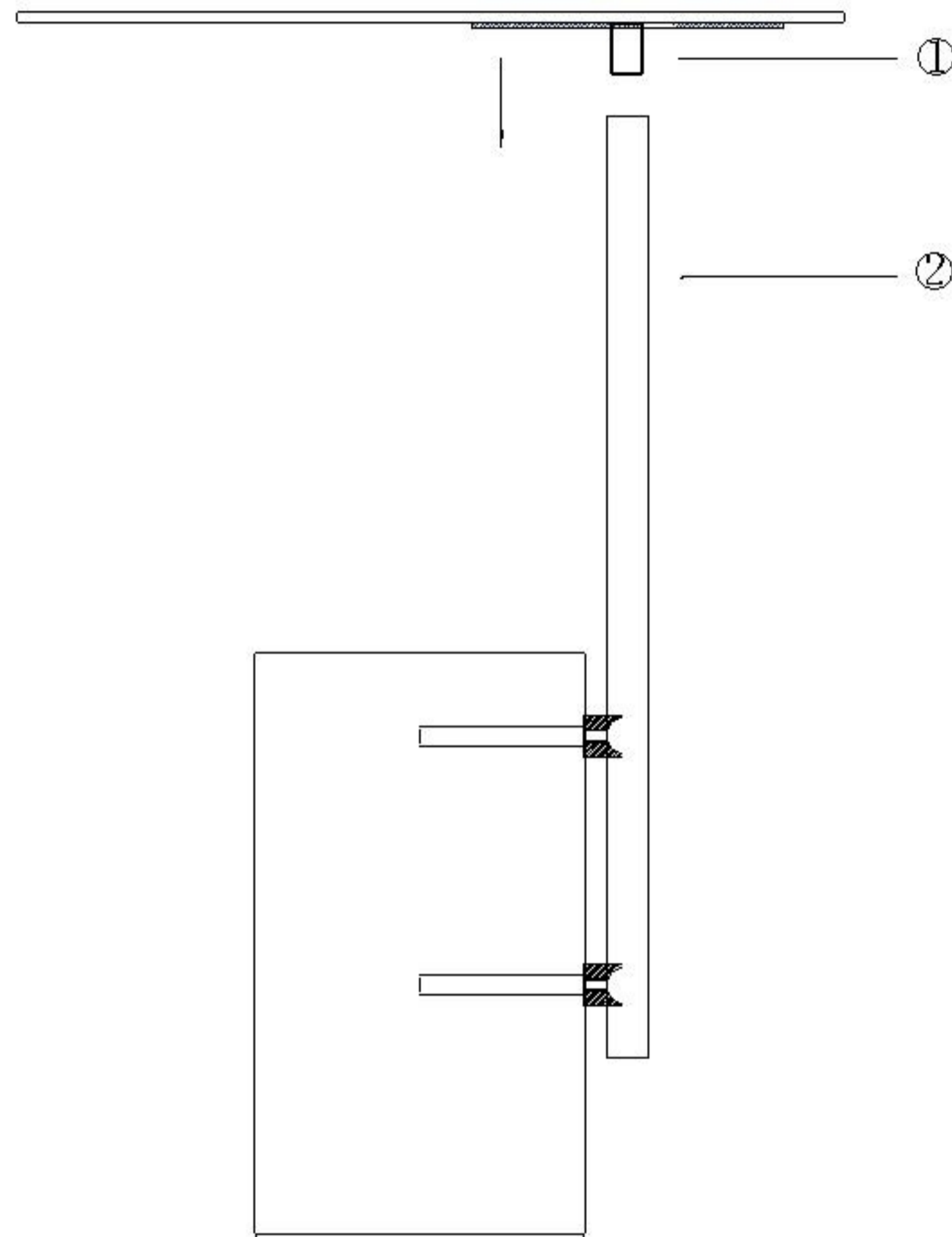


CT8693



Installation steps:

1. Put 1 on 2 in the direction shown by the arrow in the illustration, and then tighten land 2 in a clockwise direction.

Maintenance method:

1. Keep the table dry. In case of water or dirt, please clean up as soon as possible.
2. Avoid hard object collision.
3. Avoid carrying more than 20KG on your desk.
4. Do not use it as a weapon to hurt people or animals.
5. Avoid frequent movement after the position is fixed.
If you do not use it for a long time, please cover it with dust cover.