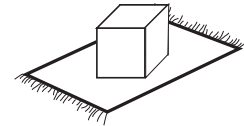


**GENERAL NOTE: CAREFULLY REMOVE ALL WRAPPING MATERIALS AND ENSURE ALL PARTS ARE ACCOUNTED FOR. ASSEMBLE ON A CLEAN FLAT SURFACE TO AVOID SCRATCHES. DO NOT DISCARD THE PACKAGING UNTIL ITEM IS FULLY ASSEMBLED.**



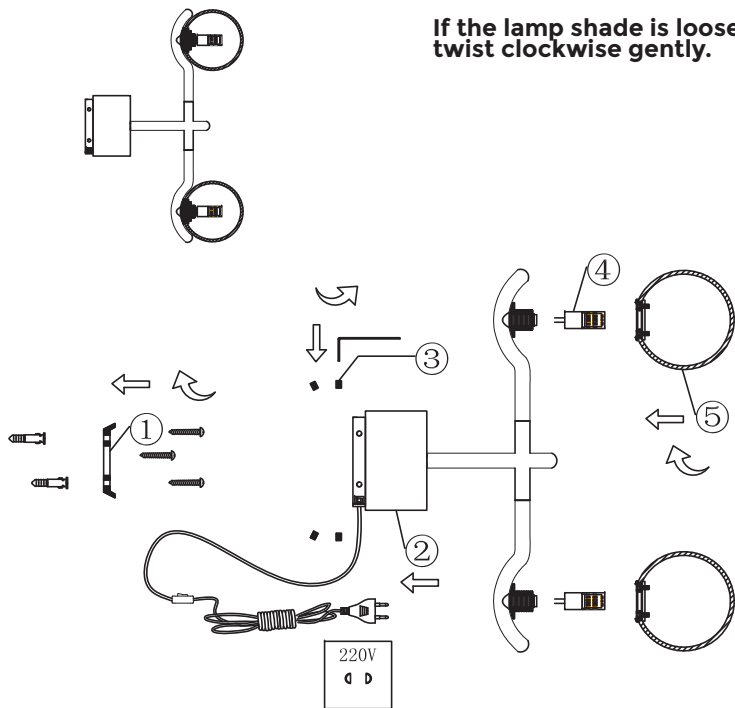
G4 12V X 2 , 3W X 1 Max.

Rated Voltage: 230V

Frequency: 50Hz



**If the lamp shade is loose,  
twist clockwise gently.**



### Before you begin

- Read instructions carefully before you commence install
- Keep instructions for future reference or plans of resale

### Warning



- Use caution, electricity can be dangerous.
- Before commencing install, ensure the power supply is disconnected at the fuse box.
- This light fixture is for use indoors only.

### Installation

- Please use caution when handling and installing to avoid damage to the product.
- Avoid mounting the fitting on a damp surface such as newly painted or plastered area. This may cause discoloration to the finish.
- To prevent rusting avoid placing the light near damp areas or in direct heat.
- Indoor use only

### Tools



### Bulb Replacement

- 3W\*1 Max. G4 12V\*3 Globe. Dispose of old bulbs with care.

### Important

- If the electrical cable is damaged, do not use light.